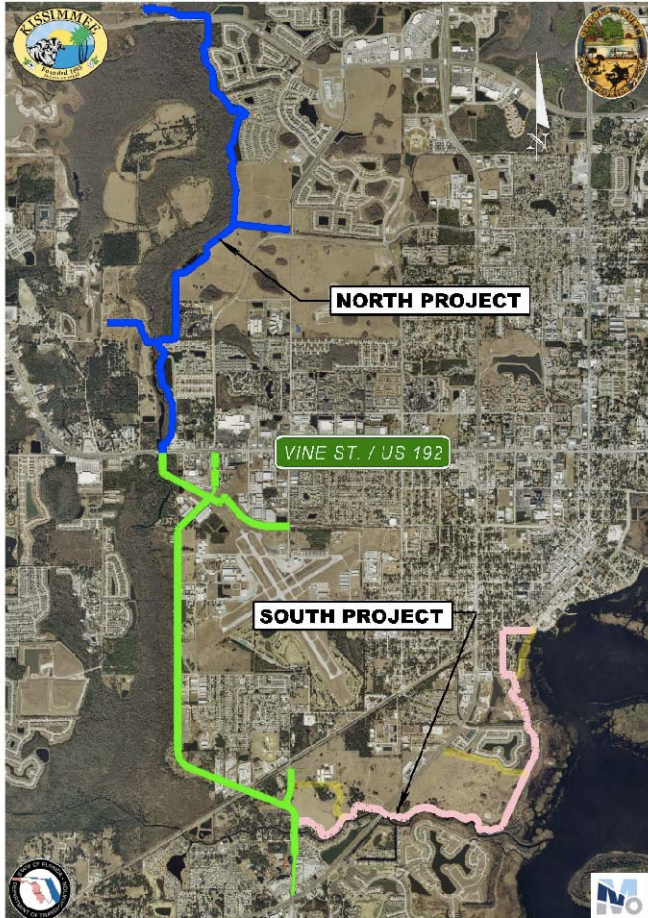


SHINGLE CREEK REGIONAL TRAIL UPDATE FOR JANUARY 2013



Thank you for your interest in the Shingle Creek Regional Trail. Below are a few project highlights as of January 14, 2013:

The design effort for the Shingle Creek Regional Trail (SCRT) has been divided into North and South project sections. They are separated by a middle section comprised of the Kissimmee Multi-use Trail and the Hoagland Boulevard Extension projects; both of which are not part of this project. Once complete, the entire route is planned to be contiguous. See the map of the approved alignments to the left.

North Phase Status

The North Project Area - Phase 1 100% Plans were submitted January 14, 2013.

South Phase Status

The alignment for the South Project Area - Phase 1 was approved in late November, 2012. Preliminary Plans are underway with a goal to have them completed by summer, 2013.

Recent Accomplishments

- Presentation regarding the overall project was made to the Kissimmee City Commission (09-11-2012)
- South Project Area, Public Information Meeting (10-04-2012)
- Osceola County Welcome Center / History Museum Grand Opening (10-18-2012)
- SCRT Grant Funding Public Meeting (10-25-2012)
- South Alignment Analysis Report finalized and approved (11-30-2012)
- Ongoing coordination with Osceola County Land Conservation Advisory Board (LCAB) for properties adjacent to Shingle Creek. The City of Kissimmee and KCG presented to the Board at both October and November, 2012 meetings, and at the January, 2013 meeting.

PROJECT GOALS The goals of the SCRT are to provide a safe, natural recreation amenity for the Kissimmee, Osceola County and Central Florida residents, and also to attract ecotourism for bicyclists, pedestrians and recreational water users such as canoeists and kayakers to the surrounding urban area. SCRT is the southern portion of a planned 32-mile, multi-county regional trail system.

- North Phase 1 100% Plans submitted on January 14, 2013
- South Phase 1 Preliminary Plans are underway

IMAGES OF THE SCRT SOUTHERN TRAIL PROPOSED PROPERTY

Below are images of the South Phase 1 area, taken during the design team site reconnaissance in September, 2012.

Once constructed, this trail will present opportunities for bird-watching, among other recreational uses.



A well attended public information meeting was held in the City of Kissimmee Chambers in October, 2012.





The project is being developed through cooperation between the local governments of the City of Kissimmee, Osceola County, the City of Orlando and Orange County. The Orlando Metropolitan Planning Organization (MetroPlan – Orlando) was instrumental in securing the federal funds for this project. The FDOT is responsible for administering the funds.

To be added to our database of interested parties please send a request via e-mail to jacklyn.vanderpol@thefulcrumintl.com.

The project is being developed through cooperation between the local governments of the City of Kissimmee, Osceola County, the City of Orlando and Orange County. The Orlando Metropolitan Planning Organization (MetroPlan – Orlando) was instrumental in securing the federal funds for this project. The FDOT is responsible for administering the funds.



This is the end of the SCRT January, 2013 Update. For more information please check back on this website or contact: Randy Schrader, Project/Long-Range Planner, City of Kissimmee at RSCHRADE@kissimmee.org or 407-518-2244.

