

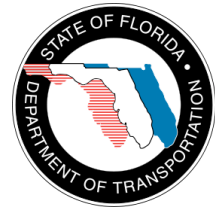
SHINGLE CREEK REGIONAL TRAIL UPDATE FOR SEPTEMBER 2012

Thank you for your interest in the Shingle Creek Regional Trail. Below are a few project highlights as of September 2012:

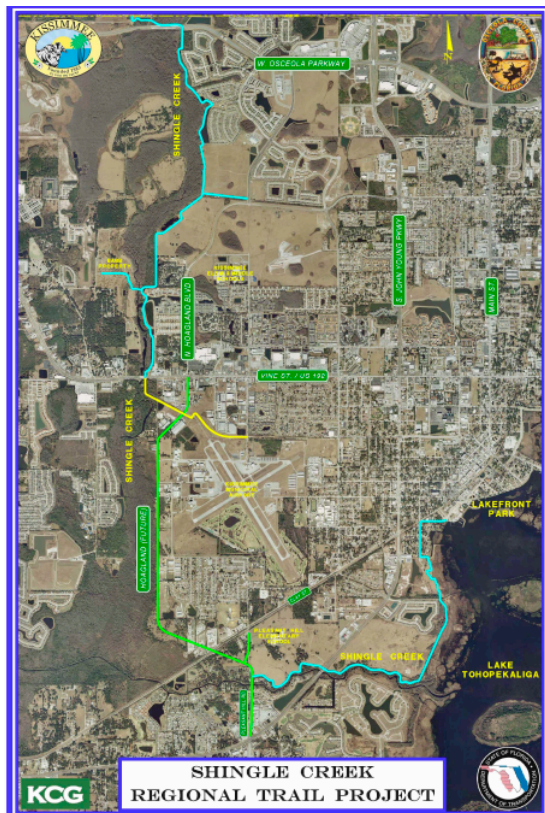
Design of the North Project Area - Phase 1 is at approximately 60 percent completion. In early September, 2012, preliminary plans for this northern portion of the Shingle Creek Regional Trail will be submitted to the City of Kissimmee, and a permit application will be submitted to the South Florida Water Management District.

Meetings are being held with Homeowners' Associations and landowners adjacent to the property on the north section of the trail.

The Shingle Creek Regional Trail will have a connection at the Osceola County History Museum and Welcome Center. A grand opening of this museum/welcome center is being planned for mid-November, 2012.



The project is being developed through cooperation between the local governments of the City of Kissimmee, Osceola County, the City of Orlando and Orange County. The Orlando Metropolitan Planning Organization (MetroPlan – Orlando) was instrumental in securing the federal funds for this project. The FDOT is responsible for administering the funds.



The second sequence of LAP funding was negotiated with FDOT and approved by the City of Kissimmee Commission on August 21, 2012.

Analysis of the South Project Area portion of the Shingle Creek Regional Trail is underway and the next public meeting will be held in late September or early October. The public meeting will be advertised in the local newspapers, and e-mail invitations will be sent to those individuals who have expressed interest previously. To be added to our database of interested parties please send a request via e-mail to jacklyn.vanderpol@thefulcrumintl.com.

Hoagland Boulevard - Segment 1 is scheduled for completion on September 29, 2012. Right of way work for segments 2 and 3 is scheduled to begin in 2017. Construction is scheduled to start in 2019 and be completed by 2022.

This is the end of the SCRT September Update. For more information please check back on this website or contact: Randy Schrader, Project/Long-Range Planner, City of Kissimmee at RSCHRADE@kissimmee.org or 407-518.2244.